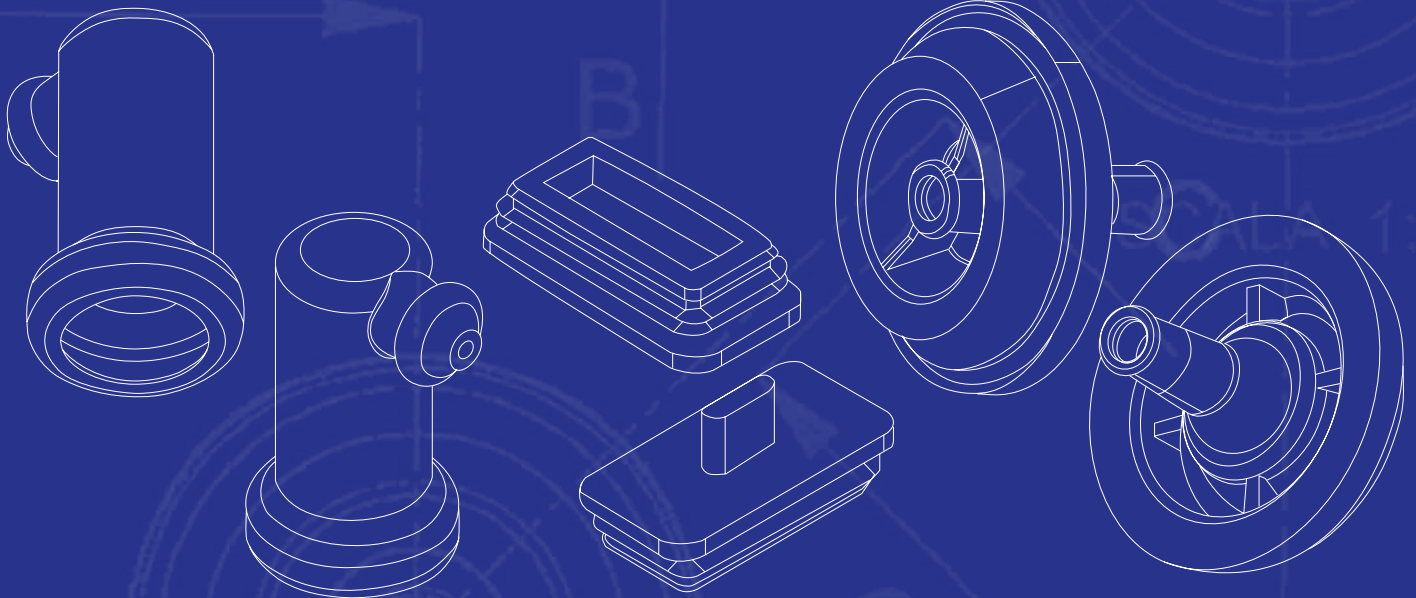
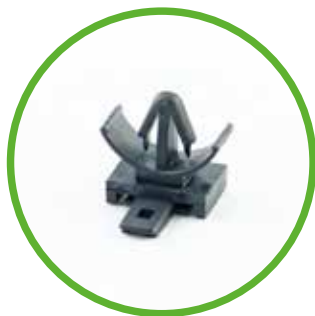


# COMPONENTS CATALOGUE



**COMPONENTS  
CATALOGUE**



---

**SEWS CABIND, from Wiring Harnesses to single components,  
we strive to become a strategic Global system supplier in the  
electrical and electronics automotive business.**

**Our values have been preserved and embraced  
throughout Sumitomo's 400-year history**








Banji-nissei  
do your sincere best,  
not only in business  
but in every aspect of  
your life

Shinyo kakujitsu  
emphasizes the  
importance of integrity;  
that is being worthy of  
the trust of others

Fusu-furi  
not to pursue  
immoral business

# Contents

## COMPONENTS

	<b>SERIES 1 - COVER</b>	2
	1A - PLASTIC COVER	3
	1B - GROMMET COVER	8
	<b>SERIES 2 - GROMMET</b>	13
	2A - GROMMET	14
	2B - RING GROMMET	17
	2C - MATSEAL	21
	<b>SERIES 3 - CABLE BRACKET</b>	22
	<b>SERIES 4 - CLIP</b>	25
	<b>SERIES 5 - STRIP</b>	28
	<b>SERIES 6 - ELECTRICAL &amp; ELECTRONICS</b>	30
	6A - DIODE	31
	6B - RESISTOR	32
	6C - SHORTCUT BRIDGE	33
	6D - PCB CIRCUIT	33
	<b>SERIES 7 - OTHER</b>	34
	<b>INDEX IHS CODE</b>	37

## SERIES 1 - COVER



**SERIES 1A - PLASTIC COVER  
PLUG 6W MTII SEALED FEMALE  
HOUSING**

IHS CODE  
**6910677600**



MATERIAL	COLOUR	HOLE DIAMETER (MM)	SHEET METAL THICKNESS (MM)	SERIES
PP	BLACK	-	-	1A



**SERIES 1A - PLASTIC COVER  
PLUG 1WAY FOR SUPERSEAL  
FEMALE HOUSING**

IHS CODE  
**6911442800**

MATERIAL	COLOUR	HOLE DIAMETER (MM)	SHEET METAL THICKNESS (MM)	SERIES
PA	BLACK	14	-	1A

**SERIES 1A - PLASTIC COVER  
PLUG 2WAY FOR SUPERSEAL  
FEMALE HOUSING**

IHS CODE  
**6911437900**



MATERIAL	COLOUR	HOLE DIAMETER (MM)	SHEET METAL THICKNESS (MM)	SERIES
PA66	BLACK	-	-	1A

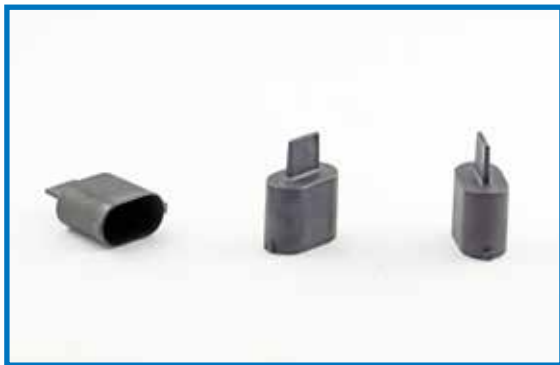
**SERIES 1 - COVER**

**SERIES 1A - PLASTIC COVER  
PLUG 3WAY FOR SUPERSEAL  
FEMALE HOUSING**

**IHS CODE  
6911409000**



MATERIAL	COLOUR	HOLE DIAMETER (MM)	SHEET METAL THICKNESS (MM)	SERIES
PA75	BLACK	-	-	1A



**SERIES 1A - PLASTIC COVER  
PLUG 6W FOR MQS SINGLE WIRE  
SEAL FEMALE HOUSING**

**IHS CODE  
6911464100**

MATERIAL	COLOUR	HOLE DIAMETER (MM)	SHEET METAL THICKNESS (MM)	SERIES
PA66	BLACK	-	-	1A

**SERIES 1A - PLASTIC COVER  
END CAP FOR CORRUGATED  
TUBE NW**

**IHS CODE  
6910678500**



MATERIAL	COLOUR	HOLE DIAMETER (MM)	SHEET METAL THICKNESS (MM)	SERIES
PA66	BLACK	22	-	1A

**SERIES 1A - PLASTIC COVER  
PLUG 8W FOR GT 280 SEALED  
FEMALE HOUSING**

IHS CODE  
**6910724500**



MATERIAL	COLOUR	HOLE DIAMETER (MM)	SHEET METAL THICKNESS (MM)	SERIES
PA66	BLACK	8	0,8 - 2,5	1A



**SERIES 1A - PLASTIC COVER  
PLUG 20W FOR MCP 1,5/2,8  
UNSEALED MALE HOUSING**

IHS CODE  
**6911442400**

MATERIAL	COLOUR	HOLE DIAMETER (MM)	SHEET METAL THICKNESS (MM)	SERIES
PP	BLACK	-	-	1A

**SERIES 1A - PLASTIC COVER  
PLUG 2W FOR KOMPACT 1.1  
SEALED FEMALE HOUSING**

IHS CODE  
**6911388000**



MATERIAL	COLOUR	HOLE DIAMETER (MM)	SHEET METAL THICKNESS (MM)	SERIES
PA	BLACK	-	-	1A

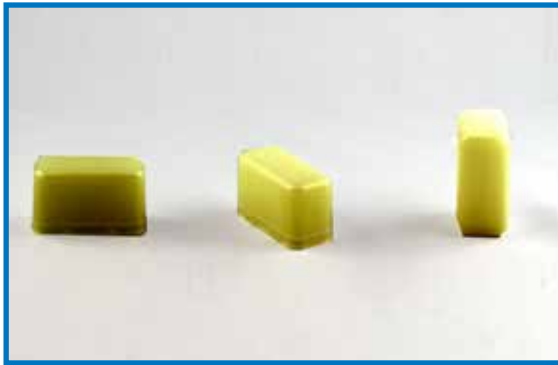
## SERIES 1 - COVER

### SERIES 1A - PLASTIC COVER PLUG 4W FOR KOMPACT 1.1 SEALED FEMALE HOUSING

IHS CODE  
**6911442500**



MATERIAL	COLOUR	HOLE DIAMETER (MM)	SHEET METAL THICKNESS (MM)	SERIES
PP	BLACK	-	-	1A



### SERIES 1A - PLASTIC COVER PLUG 12W FOR MCP 1,5/2,8 SINGLE WIRE SEAL FEMALE HOUSING

IHS CODE  
**6911455100**

MATERIAL	COLOUR	HOLE DIAMETER (MM)	SHEET METAL THICKNESS (MM)	SERIES
PE	NATURAL	-	-	1A

### SERIES 1A - PLASTIC COVER PLUG 2W FOR F800 UNSEALED FEMALE HOUSING WITH CLIP

IHS CODE  
**6911648800**



MATERIAL	COLOUR	HOLE DIAMETER (MM)	SHEET METAL THICKNESS (MM)	SERIES
PA66	BLACK	8 (SLOTTED)	-	1A



**SERIES 1A - PLASTIC COVER  
BACK SHELL 32W FOR HYBRID  
UNSEALED MALE AND FEMALE  
HOUSING**

IHS CODE  
**6911646100**



MATERIAL	COLOUR	HOLE DIAMETER (MM)	SHEET METAL THICKNESS (MM)	SERIES
PA6	BLACK	-	-	1A



**SERIES 1A - PLASTIC COVER  
BACK SHELL 24W FOR HYBRID  
UNSEALED MALE AND FEMALE  
HOUSING**

IHS CODE  
**6911646200**

MATERIAL	COLOUR	HOLE DIAMETER (MM)	SHEET METAL THICKNESS (MM)	SERIES
PA6	BLACK	-	-	1A

**SERIES 1A - PLASTIC COVER  
PLUG FOR ITT AQUA LOCK  
CONNECTOR PLATE**

IHS CODE  
**6351367400**



MATERIAL	COLOUR	HOLE DIAMETER (MM)	SHEET METAL THICKNESS (MM)	SERIES
PS	WHITE	-	-	1A

## SERIES 1 - COVER

### SERIES 1A - PLASTIC COVER PLUG 6W FOR MINISEALED FEMALE HOUSING

IHS CODE  
**6911382600**



MATERIAL	COLOUR	HOLE DIAMETER (MM)	SHEET METAL THICKNESS (MM)	SERIES
PA75	BLACK	-	-	1A



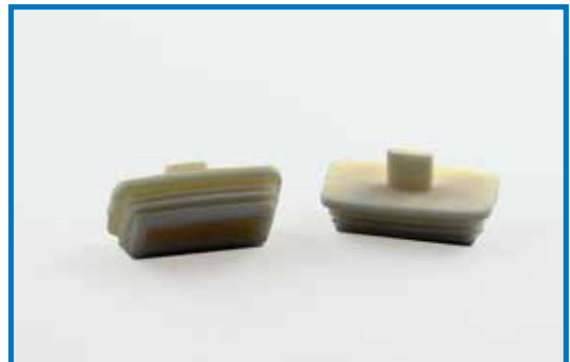
### SERIES 1A - PLASTIC COVER PLUG 1W FINLOCK 6,35 UNSEALED FEMALE HOUSING

IHS CODE  
**6911416100**

MATERIAL	COLOUR	HOLE DIAMETER (MM)	SHEET METAL THICKNESS (MM)	SERIES
PA66	BLACK	-	-	1A

### SERIES 1B - RUBBER COVER PLUG 12W FOR ECONOSEAL SEALED MALE HOUSING

IHS CODE  
**7145057200**



MATERIAL	COLOUR	HOLE DIAMETER (MM)	SHEET METAL THICKNESS (MM)	SERIES
EMP60	NATURAL	-	-	1B

**SERIES 1B - RUBBER COVER  
PLUG 2W FOR NG1 8MM SEALED  
POWER MALE HOUSING**

IHS CODE  
**7145075200**



MATERIAL	COLOUR	HOLE DIAMETER (MM)	SHEET METAL THICKNESS (MM)	SERIES
TO A125-50	BLACK	-	-	1B



**SERIES 1B - RUBBER COVER  
RUBBER COVER FOR OIL  
PRESSURE SENSOR**

IHS CODE  
**7145081700**

MATERIAL	COLOUR	HOLE DIAMETER (MM)	SHEET METAL THICKNESS (MM)	SERIES
TO A125-50	BLACK	-	-	1B

**SERIES 1B - RUBBER COVER  
PLUG 8W FOR DCS-2 SEALED  
MALE HOUSING**

IHS CODE  
**7145058400**



MATERIAL	COLOUR	HOLE DIAMETER (MM)	SHEET METAL THICKNESS (MM)	SERIES
EMP60	NATURAL	-	-	1B

**SERIES 1B - RUBBER COVER  
PLUG 24W FOR HYBRID  
UNSEALED MALE HOUSING**

IHS CODE  
**7145086500**



MATERIAL	COLOUR	HOLE DIAMETER (MM)	SHEET METAL THICKNESS (MM)	SERIES
RUBBER	BLACK	-	-	1B



**SERIES 1B - RUBBER COVER  
COVER FOR RELÈ AND FUSE BOX**

IHS CODE  
**7105352500**

MATERIAL	COLOUR	HOLE DIAMETER (MM)	SHEET METAL THICKNESS (MM)	SERIES
MTA80-50	BLACK	-	-	1B

**SERIES 1B - RUBBER COVER  
RUBBER BACKSHELL FOR13W  
ECONOSEAL HOUSING**

IHS CODE  
**7145069400**



MATERIAL	COLOUR	HOLE DIAMETER (MM)	SHEET METAL THICKNESS (MM)	SERIES
MA120-40	BLACK	-	-	1B

**SERIES 1B - RUBBER COVER**  
**RUBBER BACKSHELL FOR 24W**  
**SICMA MALE HOUSING**

IHS CODE  
**7105376200**



MATERIAL	COLOUR	HOLE DIAMETER (MM)	SHEET METAL THICKNESS (MM)	SERIES
TOA125-50	BLACK	-	-	1B



**SERIES 1B - RUBBER COVER**  
**RUBBER BACKSHELL FOR 24W**  
**SICMA FEMALE HOUSING**

IHS CODE  
**7145058100**

MATERIAL	COLOUR	HOLE DIAMETER (MM)	SHEET METAL THICKNESS (MM)	SERIES
TOA125-50	BLACK	-	-	1B

**SERIES 1B - RUBBER COVER**  
**RUBBER COVER FOR WIRE**  
**0,2/5,6**

IHS CODE  
**7210414400**



MATERIAL	COLOUR	HOLE DIAMETER (MM)	SHEET METAL THICKNESS (MM)	SERIES
MTA80	GREY	-	-	1B

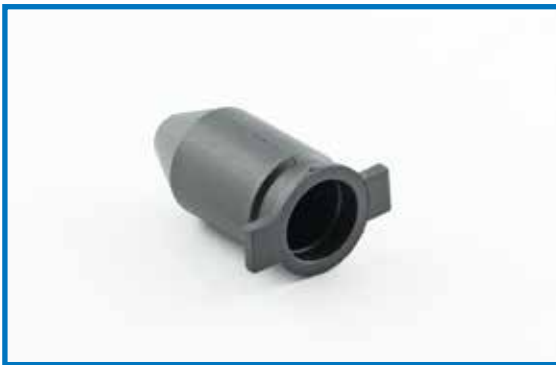
**SERIES 1B - RUBBER COVER**

**RUBBER COVER FOR 34W DOOR TO BODY MALE HOUSING**

IHS CODE  
**7105392400**



MATERIAL	COLOUR	HOLE DIAMETER (MM)	SHEET METAL THICKNESS (MM)	SERIES
NBR50	BLACK	-	-	1B



**SERIES 1B - RUBBER COVER RUB**  
**RUBBER COVER FOR POSITIVE LOCK TERMINAL**

IHS CODE  
**7210421000**

MATERIAL	COLOUR	HOLE DIAMETER (MM)	SHEET METAL THICKNESS (MM)	SERIES
TOA125-50	BLACK	-	-	1B

## SERIES 2 - GROMMET



## SERIES 2 - GROMMET

### SERIES 2A - GROMMET GROMMET

IHS CODE  
**7105429600**



MATERIAL	COLOUR	HOLE DIAMETER (MM)	SHEET METAL THICKNESS (MM)	SERIES
EPDM TA50-50	BLACK	12	1,5 - 2,5	2A



### SERIES 2A - GROMMET GROMMET WITH PLASTIC INSERT

IHS CODE  
**7105297500**

MATERIAL	COLOUR	HOLE DIAMETER (MM)	SHEET METAL THICKNESS (MM)	SERIES
EPDM	BLACK	60	1	2A

### SERIES 2A - GROMMET GROMMET

IHS CODE  
**6910668900**



MATERIAL	COLOUR	HOLE DIAMETER (MM)	SHEET METAL THICKNESS (MM)	SERIES
TOAF	BLACK	56	NN	2A



**SERIES 2A - GROMMET  
GROMMET**

IHS CODE  
**7105299400**



MATERIAL	COLOUR	HOLE DIAMETER (MM)	SHEET METAL THICKNESS (MM)	SERIES
NEOPRENE	BLACK	19	4	2A



**SERIES 2A - GROMMET  
GROMMET**

IHS CODE  
**7105335300**

MATERIAL	COLOUR	HOLE DIAMETER (MM)	SHEET METAL THICKNESS (MM)	SERIES
EPDM	BLACK	45	2,5	2A

**SERIES 2A - GROMMET  
GROMMET FOR DOOR  
PASSENGER SIDE**

IHS CODE  
**7105445500**



MATERIAL	COLOUR	HOLE DIAMETER (MM)	SHEET METAL THICKNESS (MM)	SERIES
TA50-45	BLACK	24*44	1,6	2A

## SERIES 2 - GROMMET

### SERIES 2A - GROMMET GROMMET FOR DOOR DRIVER SIDE

IHS CODE  
**7105445600**



MATERIAL	COLOUR	HOLE DIAMETER (MM)	SHEET METAL THICKNESS (MM)	SERIES
TA50-45	BLACK	24*44	1,6	2A



### SERIES 2A - GROMMET GROMMET

IHS CODE  
**7105192700**

MATERIAL	COLOUR	HOLE DIAMETER (MM)	SHEET METAL THICKNESS (MM)	SERIES
EPDM	BLACK	66*46	1,6	2A

### SERIES 2A - GROMMET GROMMET

IHS CODE  
**7105397300**



MATERIAL	COLOUR	HOLE DIAMETER (MM)	SHEET METAL THICKNESS (MM)	SERIES
EPDM	BLACK	42	1,5	2A

**SERIES 2A - GROMMET  
GROMMET**

IHS CODE  
**7105316700**



MATERIAL	COLOUR	HOLE DIAMETER (MM)	SHEET METAL THICKNESS (MM)	SERIES
TA50-50	BLACK	45*30	1	2A



**SERIES 2A - GROMMET  
GROMMET**

IHS CODE  
**7105465700**

MATERIAL	COLOUR	HOLE DIAMETER (MM)	SHEET METAL THICKNESS (MM)	SERIES
MA120-50	BLACK	45	0,7	2A

**SERIES 2B - RING GROMMET  
GROMMET**

IHS CODE  
**7105452600**

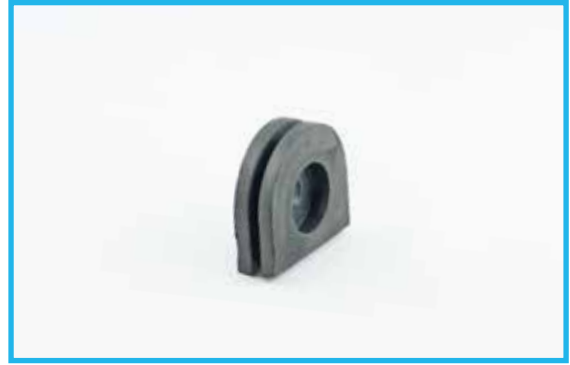


MATERIAL	COLOUR	HOLE DIAMETER (MM)	SHEET METAL THICKNESS (MM)	SERIES
NBR TOAF125-50	BLACK	5,2	-	2B

## SERIES 2 - GROMMET

### SERIES 2B - RING GROMMET GROMMET

IHS CODE  
**7105396100**



MATERIAL	COLOUR	HOLE DIAMETER (MM)	SHEET METAL THICKNESS (MM)	SERIES
EPDM	BLACK	-	-	2B



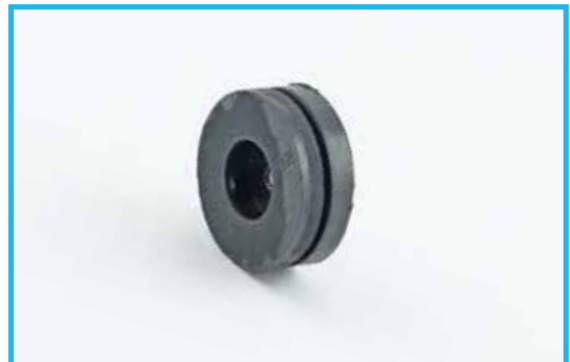
### SERIES 2B - RING GROMMET RING GROMMET

IHS CODE  
**7105413900**

MATERIAL	COLOUR	HOLE DIAMETER (MM)	SHEET METAL THICKNESS (MM)	SERIES
TA20-55 EPDM	BLACK	54	1,5	2B

### SERIES 2B - RING GROMMET RING GROMMET

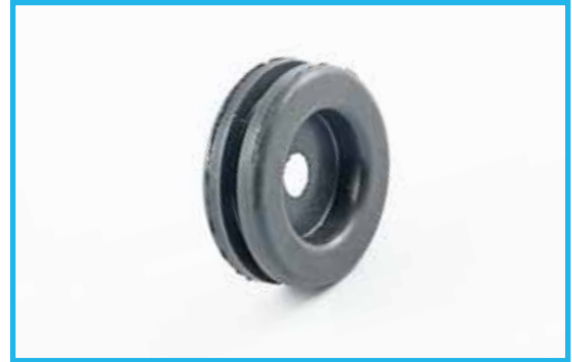
IHS CODE  
**7105292200**



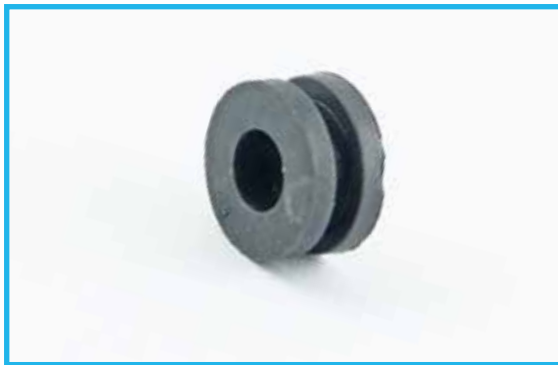
MATERIAL	COLOUR	HOLE DIAMETER (MM)	SHEET METAL THICKNESS (MM)	SERIES
TA20-55 EPDM	BLACK	18	2,5	2B

**SERIES 2B - RING GROMMET**  
**RING GROMMET**

IHS CODE  
**7105399700**



MATERIAL	COLOUR	HOLE DIAMETER (MM)	SHEET METAL THICKNESS (MM)	SERIES
TA20-55 EPDM	BLACK	30	5	2B



**SERIES 2B - RING GROMMET**  
**RING GROMMET**

IHS CODE  
**7105422300**

MATERIAL	COLOUR	HOLE DIAMETER (MM)	SHEET METAL THICKNESS (MM)	SERIES
TA20-55 EPDM	BLACK	16	5	2B

**SERIES 2B - RING GROMMET**  
**RING GROMMET**

IHS CODE  
**7190065900**

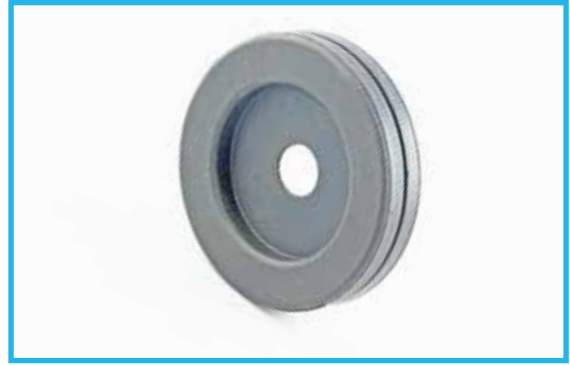


MATERIAL	COLOUR	HOLE DIAMETER (MM)	SHEET METAL THICKNESS (MM)	SERIES
TA20-55 EPDM	BLACK	16	2,5	2B

SERIES 2 - GROMMET

**SERIES 2B - RING GROMMET**  
**RING GROMMET**

IHS CODE  
**7211030500**



MATERIAL	COLOUR	HOLE DIAMETER (MM)	SHEET METAL THICKNESS (MM)	SERIES
TA20-55 EPDM	BLACK	46	2,5	2B



**SERIES 2B - RING GROMMET**  
**RING GROMMET**

IHS CODE  
**7190065200**

MATERIAL	COLOUR	HOLE DIAMETER (MM)	SHEET METAL THICKNESS (MM)	SERIES
TA20-55 EPDM	BLACK	30	1,5	2B

**SERIES 2B - RING GROMMET**  
**RING GROMMET**

IHS CODE  
**7105418900**



MATERIAL	COLOUR	HOLE DIAMETER (MM)	SHEET METAL THICKNESS (MM)	SERIES
TA20-55 EPDM	BLACK	18	1,5	2B

**SERIES 2B - RING GROMMET**  
**RING GROMMET**

IHS CODE  
**7105447000**



MATERIAL	COLOUR	HOLE DIAMETER (MM)	SHEET METAL THICKNESS (MM)	SERIES
TA20-55 EPDM	BLACK	14	5	2B



**SERIES 2C - MATSEAL**  
**MATSEAL 15W FOR**  
**PASSTHROUGH HOUSING**

IHS CODE  
**7105330600**

MATERIAL	COLOUR	HOLE DIAMETER (MM)	SHEET METAL THICKNESS (MM)	SERIES
VITON55	GRAY	-	-	2C

## SERIES 3 - CABLE BRACKET



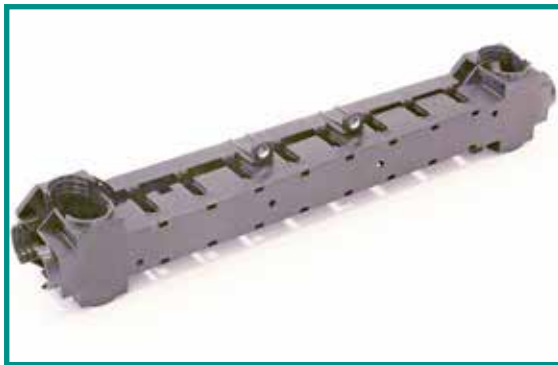


**SERIES 3 - CABLE BRACKET  
BRACKET CHANNEL**

IHS CODE  
**6923499400**



MATERIAL	COLOUR	HOLE DIAMETER (MM)	SHEET METAL THICKNESS (MM)	SERIES
PP	BLACK	-	-	3



**SERIES 3 - CABLE BRACKET  
CHANNEL CNH**

IHS CODE - UPPER COVER  
**6924065600**

IHS CODE - LOWER COVER  
**6924065700**

MATERIAL	COLOUR	HOLE DIAMETER (MM)	SHEET METAL THICKNESS (MM)	SERIES
PA66	BLACK	-	-	3

**SERIES 3 - CABLE BRACKET  
CHANNEL FOR ALFA STELVIO  
TORQUE VECTORING**

IHS CODE  
**6924039900**



MATERIAL	COLOUR	HOLE DIAMETER (MM)	SHEET METAL THICKNESS (MM)	SERIES
PA230,120	BLACK	-	-	3

**SERIES 3 - CABLE BRACKET**

**SERIES 3 - CABLE BRACKET  
CHANNEL FOR ALFA GIULIA QV**

IHS CODE - UPPER COVER

**6924103400**

IHS CODE - LOWER COVER

**6924103300**



MATERIAL	COLOUR	HOLE DIAMETER (MM)	SHEET METAL THICKNESS (MM)	SERIES
PA66	BLACK	-	-	3

## SERIES 4 - CLIP



## SERIES 4 - CLIP

### SERIES 4 - CLIP CLIP FOR 6W NSCC MALE HOUSING

IHS CODE  
**6970037100**



MATERIAL	COLOUR	HOLE DIAMETER (MM)	SHEET METAL THICKNESS (MM)	SERIES
PA66	BLACK	6,5	0,8 - 2,5	4



### SERIES 4 - CLIP CLIP FOR 12W MCP HYBRID MALE HOUSING

IHS CODE  
**6810509000**

MATERIAL	COLOUR	HOLE DIAMETER (MM)	SHEET METAL THICKNESS (MM)	SERIES
PA66	BLACK	8	0,8 - 3	4

### SERIES 4 - CLIP CLIP FOR CONNECTOR HD SERIES

IHS CODE  
**6810339700**



MATERIAL	COLOUR	HOLE DIAMETER (MM)	SHEET METAL THICKNESS (MM)	SERIES
PA6	NATURAL	6,5	0,7 - 2	4

**SERIES 4 - CLIP**  
**CLIP FOR CONNECTOR**  
**HD SERIES**

IHS CODE  
**6098577300**



MATERIAL	COLOUR	HOLE DIAMETER (MM)	SHEET METAL THICKNESS (MM)	SERIES
PA6	NATURAL	6*12	0,7-2	4



**SERIES 4 - CLIP**  
**CLIP FOR CONNECTOR**

IHS CODE  
**6810162400**

MATERIAL	COLOUR	HOLE DIAMETER (MM)	SHEET METAL THICKNESS (MM)	SERIES
PA66	GREY	9	-	4

**SERIES 4 - CLIP**  
**CLIP FOR CONNECTOR**  
**TS SERIES**

IHS CODE  
**6810746300**



MATERIAL	COLOUR	HOLE DIAMETER (MM)	SHEET METAL THICKNESS (MM)	SERIES
PA70,50	BLACK	6,5	0,7-5	4

## SERIES 5 - STRIP



**SERIES 5 - STRIP**  
**CLIP WITH STRIP AND COVER**

IHS CODE  
**6810727500**



MATERIAL	COLOUR	HOLE DIAMETER (MM)	SHEET METAL THICKNESS (MM)	SERIES
PA70,50 66	BLACK	6,5	0,7-5	5



**SERIES 5 - STRIP**  
**CLIP WITH SINGLE STRIP**

IHS CODE  
**6810-6163**

MATERIAL	COLOUR	HOLE DIAMETER (MM)	SHEET METAL THICKNESS (MM)	SERIES
PP	BLACK	7*12	0,6-2,6	5

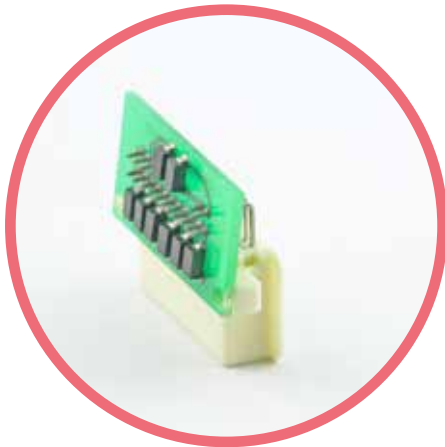
**SERIES 5 - STRIP**  
**CLIP WITH DOUBLE STRIP**  
**L=100MM**

IHS CODE  
**6810545100**



MATERIAL	COLOUR	HOLE DIAMETER (MM)	SHEET METAL THICKNESS (MM)	SERIES
PP	NATURAL	7*12	0,65-2,6	5

## SERIES 6 - ELECTRICAL & ELECTRONICS







**SERIES 6A - DIODE**

**DIODE OVERMOLDED WITH 2W SUPERSEAL INTERFACE**

IHS CODE	MATERIAL	COLOUR	VALUE	SERIES
5012379000	RESIN HOT HEALT 646 HENKEL	BLACK	1A-1000V	6A
5012616900	RESIN HOT HEALT 646 HENKEL	BLACK	1A-600V	6A
5012617000	RESIN HOT HEALT 646 HENKEL	BLACK	1A-400V	6A
5012614100	RESIN HOT HEALT 646 HENKEL	BLACK	3A-400V	6A
5012617100	RESIN HOT HEALT 646 HENKEL	BLACK	3A-600V	6A
5012617200	RESIN HOT HEALT 646 HENKEL	BLACK	3A-1300V	6A
5012616800	RESIN HOT HEALT 646 HENKEL	BLACK	13,7A-220V-5Kw	6A

**ZENER DIODE OVERMOLDED WITH 2W SUPERSEAL INTERFACE**

IHS CODE	MATERIAL	COLOUR	VALUE	SERIES
5012617300	RESIN HOT HEALT 646 HENKEL	BLACK	12V-2w	6A

**SERIES 6B - RESISTOR**

**RESISTOR OVERMOLDED WITH 2W SUPERSEAL INTERFACE**

IHS CODE	MATERIAL	COLOUR	VALUE	SERIES
5012617400	RESIN HOT HEALT 646 HENKEL	BLACK	1Ω-2w ±1%	6B
5012617500	RESIN HOT HEALT 646 HENKEL	BLACK	5,1Ω-0,5w ±1%	6B
5012617600	RESIN HOT HEALT 646 HENKEL	BLACK	10Ω-0,5w ±1%	6B
5012617700	RESIN HOT HEALT 646 HENKEL	BLACK	15Ω-0,6w ±1%	6B
5012617800	RESIN HOT HEALT 646 HENKEL	BLACK	100Ω-2w ±1%	6B
5012614200	RESIN HOT HEALT 646 HENKEL	BLACK	120Ω-0,5w ±1%	6B
5012617900	RESIN HOT HEALT 646 HENKEL	BLACK	270Ω-0,5w ±1%	6B
5012618000	RESIN HOT HEALT 646 HENKEL	BLACK	330Ω-2w ±1%	6B
5012618100	RESIN HOT HEALT 646 HENKEL	BLACK	390Ω-0,6w ±1%	6B
5012618300	RESIN HOT HEALT 646 HENKEL	BLACK	1KΩ-1w ±1%	6B
5012618400	RESIN HOT HEALT 646 HENKEL	BLACK	1KΩ-2w ±1%	6B
5012618500	RESIN HOT HEALT 646 HENKEL	BLACK	1KΩ-0,6w ±1%	6B
5012618700	RESIN HOT HEALT 646 HENKEL	BLACK	2,2KΩ-0,5w ±1%	6B
5012618800	RESIN HOT HEALT 646 HENKEL	BLACK	2,7KΩ-0,6w ±1%	6B
5012618900	RESIN HOT HEALT 646 HENKEL	BLACK	3KΩ-0,5w ±1%	6B
5012576800	RESIN HOT HEALT 646 HENKEL	BLACK	5,6KΩ-0,5w ±1%	6B
5012619000	RESIN HOT HEALT 646 HENKEL	BLACK	100KΩ-0,5w ±1%	6B

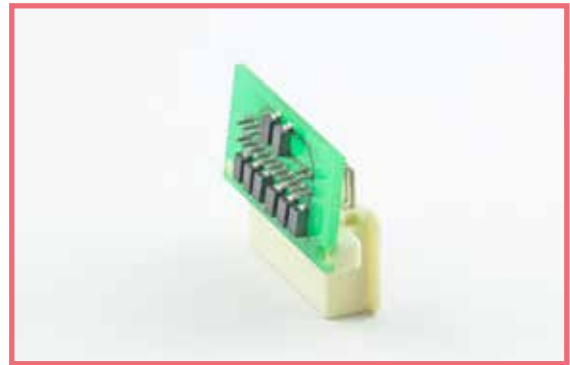
**SERIES 6C - SHORTCUT BRIDGE**

**SHORTCUT BRIDGE OVERMOLDED WITH 2W SUPERSEAL INTERFACE**

IHS CODE	MATERIAL	COLOUR	VALUE	SERIES
<b>5012619100</b>	RESIN HOT HEALT 646 HENKEL	BLACK		<b>6C</b>

**SERIES 6D - PCB CIRCUIT**  
**PCB CIRCUIT WITH 8 DIODES**

IHS CODE  
**5012413800**



MATERIAL	COLOUR	HOLE DIAMETER (MM)	SHEET METAL THICKNESS (MM)	SERIES
<b>FR4</b>	<b>BLACK</b>	-	-	<b>6D</b>

## SERIES 7 - OTHER



**SERIES 7 - OTHERS**  
**METAL SUPPORT DIAM 19MM**

**IHS CODE**  
**8410300900**



MATERIAL	COLOUR	HOLE DIAMETER (MM)	SHEET METAL THICKNESS (MM)	SERIES
FE/ZN 12 VI	METAL	-	-	7



**SERIES 7 - OTHERS**  
**PLASTIC PLATE TO FIX RELÈ**

**IHS CODE**  
**6920295100**

MATERIAL	COLOUR	HOLE DIAMETER (MM)	SHEET METAL THICKNESS (MM)	SERIES
PP-GF-30	BLACK	-	-	7

**SERIES 7 - OTHERS**  
**PLASTIC SNAP**  
**FOR CORRUGATED TUBE LOCK**

**IHS CODE**  
**6923498100**



MATERIAL	COLOUR	HOLE DIAMETER (MM)	SHEET METAL THICKNESS (MM)	SERIES
PA66	BLACK	-	-	7

**SERIES 7 - OTHERS**

**BACKSHELL FOR 2W AMPHENOL  
FOR W000000025**

**IHS CODE  
6911498300**



MATERIAL	COLOUR	HOLE DIAMETER (MM)	SHEET METAL THICKNESS (MM)	SERIES
PA66	BLACK	-	-	7

## INDEX IHS CODE

IHS CODE	PAG	IHS CODE	PAG
5012379000	31	5012617300	31
5012413800	33	5012617400	32
5012576800	32	5012617500	32
5012614100	31	5012617600	32
5012614200	32	5012617700	32
5012616800	31	5012617800	32
5012616900	31	5012617900	32
5012617000	31	5012618000	32
5012617100	31	5012618100	32
5012617200	31	5012618300	32

IHS CODE	PAG	IHS CODE	PAG
5012618400	32	6810727500	29
5012618500	32	6810746300	27
5012618700	32	6910668900	14
5012618800	32	6910677600	3
5012618900	32	6910678500	4
5012619000	32	6910724500	5
5012619100	33	6911382600	8
6098577300	27	6911388000	5
6351367400	7	6911409000	4
6810162400	27	6911416100	8
6810339700	26	6911437900	3
6810509000	26	6911442400	5
6810545100	29	6911442500	6



IHS CODE	PAG	IHS CODE	PAG
6911442800	3	6924103300	24
6911455100	6	6924103400	24
6911464100	4	6970037100	26
6911498300	36	7105192700	16
6911646100	7	7105292200	18
6911646200	7	7105297500	14
6911648800	6	7105299400	15
6920295100	35	7105316700	17
6923498100	35	7105330600	21
6923499400	23	7105335300	15
6924039900	23	7105352500	10
6924065600	23	7105376200	11
6924065700	23	7105392400	12

IHS CODE	PAG	IHS CODE	PAG
7105396100	18	7145058100	11
7105397300	16	7145058400	9
7105399700	19	7145069400	10
7105413900	18	7145075200	9
7105418900	20	7145081700	9
7105422300	19	7145086500	10
7105429600	14	7190065200	20
7105445500	15	7190065900	19
7105445600	16	7210414400	11
7105447000	21	7210421000	12
7105452600	17	7211030500	20
7105465700	17	8410300900	35
7145057200	8	6810-6163	29



SEWS CABIND Group is a Multinational Company whose headquarters are based in Collegno, Turin, where all the company's top management and customer business units have been centralized.

SEWS CABIND's added value lies in how flexible our processes are, from prototyping to making decisions, we timely satisfy all of our customer's requirements.

- 5 production plants
- Over 8.095 employees

## CONNECT WITH INNOVATION

SEWS CABIND is owned by the Sumitomo Group under the multinational companies Sumitomo Wiring System Europe Ltd and Sumitomo Electric Industries Ltd.

Sumitomo Electric Group has a broad technical know-how excellence: a skill through which it produces an extensive range of products and materials. The company strives to create new value in terms of materials, systems and solutions through a process of constant innovation.

**We have set certain levels of expectation and we deliver on them.**

For further information, please contact

**SEWS CABIND S.p.A.**

Corso Pastrengo, 40  
10093 Collegno, Torino Italy  
Tel: +39 011 40106611 Fax: +39 011 4038546

[communication@sews-cabind.it](mailto:communication@sews-cabind.it)

[www.sews-cabind.com](http://www.sews-cabind.com)



---

**Sews-Cabind S.p.A.**

Corso Pastrengo, 40  
10093 Collegno (TO) Italy

Tel. +39 011 40106611  
Fax. +39 011 4038546

[communication@sews-cabind.it](mailto:communication@sews-cabind.it)

VAT 08174070014

**Sews Cabind Maroc S.A.S.**

Stabilimento di Ain Harrouda  
Zone Industrielle Ahmed Ben Ichou  
Km 9 Route de Rabat,  
28632 Ain Harrouda - Mohammedia  
BP130 - Maroc

Tel: +212 (0)522 74 94 94  
Fax: +212 (0)522 33 27 18

**Sews Cabind Poland Sp. z o.o.**

Stabilimento Grunwaldzka  
Via Grunwaldzka 5  
34-300 Zywiec, Polonia

Tel: +48 33 8664 100  
Fax: +48 33 8664 150